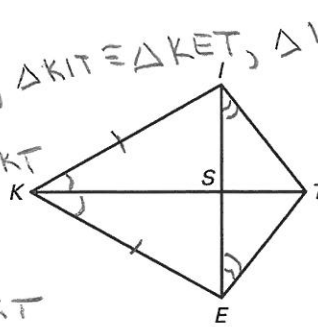


Practice A

For use with pages 229-235

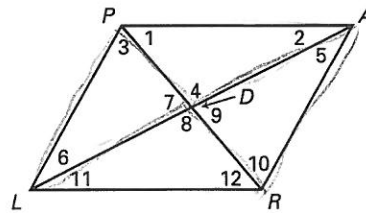
Use the diagram to answer the following.

1. What triangles appear to be congruent? $\triangle KIS \cong \triangle KES, \triangle KIT \cong \triangleKET, \triangle IST \cong \triangle EST$
2. To prove $\angle IKS \cong \angle EKS$, which triangles must you prove to be congruent? $\triangle IKS \cong \triangle EKS$ or $\triangle KIT \cong \triangleKET$
3. To prove $\angle TIS \cong \angle TES$, which triangles must you prove to be congruent? $\triangle ITS \cong \triangleETS$
4. To prove $\overline{KI} \cong \overline{KE}$, which triangles must you prove to be congruent? $\triangle IKS \cong \triangle EKS$ or $\triangle KIT \cong \triangleKET$



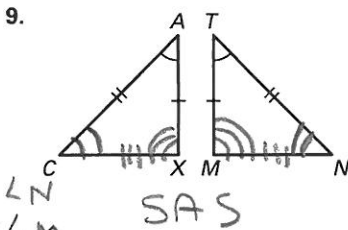
Use the diagram to answer the following.

5. If $\triangle PDA \cong \triangle RDL$, then $\angle 1$ corresponds to $\angle 12$.
6. If $\triangle PRA \cong \triangle RPL$, then $\angle 1$ corresponds to $\angle 12$.
7. If $\triangle PDL \cong \triangle RDA$, then name 3 pair of corresponding angles.
8. If $\triangle PDL \cong \triangle RDA$, then name 3 pair of corresponding sides.



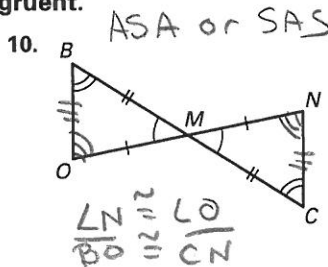
7) $\angle 3 \cong \angle 10$
 $\angle 7 \cong \angle 9$
 $\angle 6 \cong \angle 5$
 8) $\overline{PD} \cong \overline{RD}$
 $\overline{DL} \cong \overline{DA}$
 $\overline{PL} \cong \overline{RA}$

Use the marked diagram to state the method used to prove the triangles congruent. Name the additional corresponding parts that could then be concluded to be congruent.

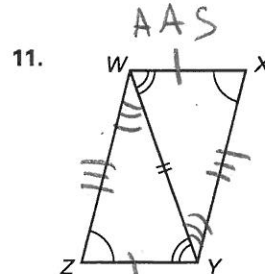


$\angle C \cong \angle X$
 $\overline{CA} \cong \overline{XM}$
 $\overline{AT} \cong \overline{MN}$

SAS



$\overline{BO} \cong \overline{CN}$
 $\overline{OM} \cong \overline{CM}$

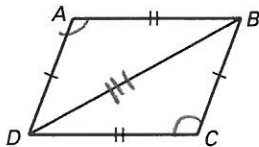


$\angle ZWY \cong \angle XYW$
 $\overline{WX} \cong \overline{YZ}$
 $\overline{WZ} \cong \overline{YX}$

Complete the proof by supplying the reasons.

12. Given: $\overline{AB} \cong \overline{DC}, \overline{AD} \cong \overline{BC}$

Prove: $\angle A \cong \angle C$

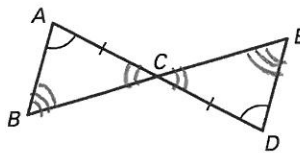


Statements	Reasons
1. $\overline{AB} \cong \overline{DC}$	1. ? Given
2. $\overline{AD} \cong \overline{BC}$	2. ? Given
3. $\overline{BD} \cong \overline{BD}$	3. ? Reflexive
4. $\triangle ABD \cong \triangle CDB$	4. ? SSS
5. $\angle A \cong \angle C$	5. ? CPCTC

Write a two-column or a paragraph proof.

13. Given: $\overline{AC} \cong \overline{DC}, \angle A \cong \angle D$

Prove: $\angle B \cong \angle E$



S	R
1) $\overline{AC} \cong \overline{DC}, \angle A \cong \angle D$	1) Given
2) $\angle ACB \cong \angle DCE$	2) Vert Ls Thm
3) $\triangle ABC \cong \triangle DEC$	3) ASA
4) $\angle B \cong \angle E$	4) CPCTC

Copyright © McDougal Littell Inc. All rights reserved.

* Could have been 3 steps